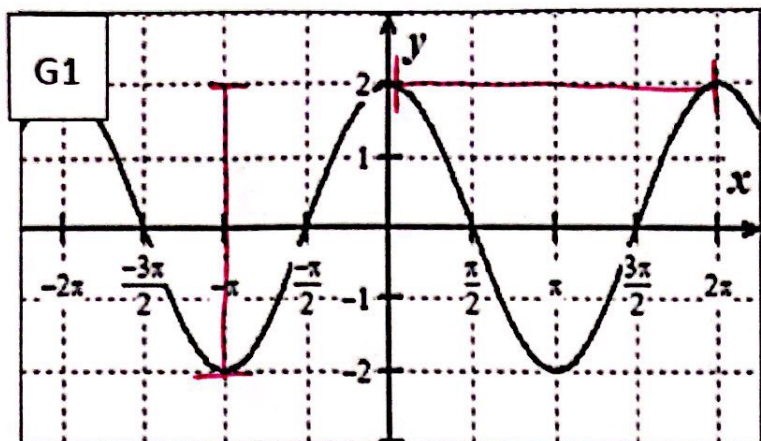


## 7.5 GUIDED NOTES: Graphs of Sine and Cosine

EX1.



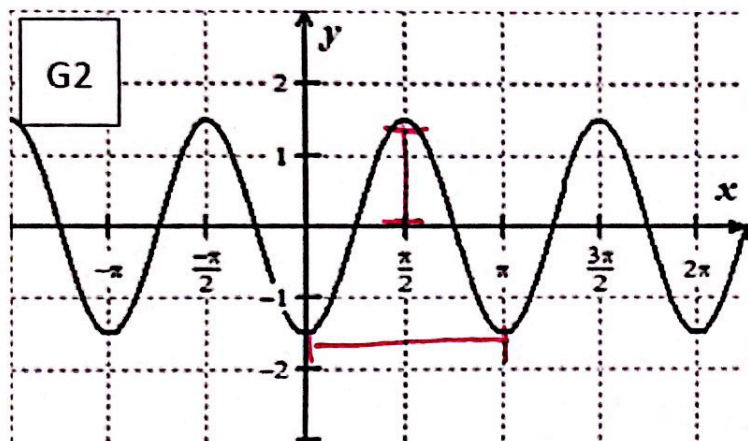
amplitude: half the height of the wave

$$\text{amp} = 2$$

period: how long until graph repeats

$$\text{period} = 2\pi$$

EX2.



frequency: reciprocal of the period

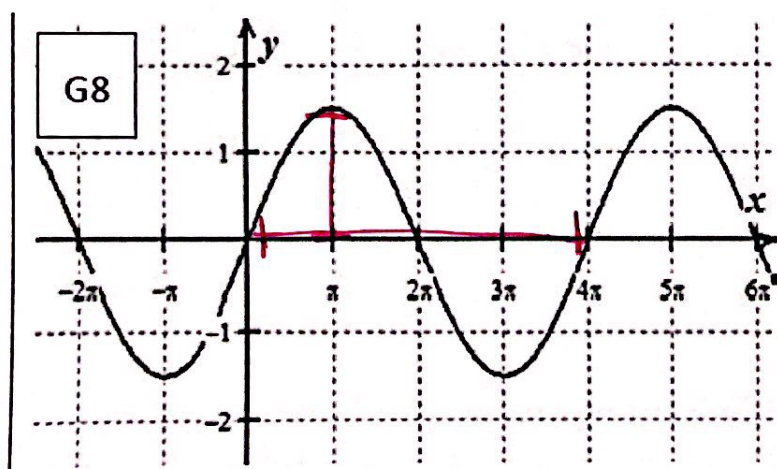
$$\text{freq} = \frac{1}{2\pi}$$

$$\text{amp} = 1.5$$

$$\text{period} = \pi$$

$$\text{freq} = \frac{1}{\pi}$$

EX3.



$$\text{amp} = 1.5$$

$$\text{period} = 4\pi$$

$$\text{freq} = \frac{1}{4\pi}$$